

MEETING, CONFERENCE, & CONVENTION

PLANNER

Medina County is the perfect place for:

- Meetings & Professional Retreats
- Networking & Social Events
- Convenient Lodging
- Presentations & Guest Speakers
- Conferences & Conventions



**MEDINA
COUNTY**

— OHIO —

CONVENTION & VISITORS BUREAU

23 Public Square, Suite 220
Medina, OH 44256
330-722-5502

visitmedinacounty.com



Welcome

Medina County is located between the “big cities” and the scenic farmland of central Ohio. Diverse in our small town rural atmosphere, yet close to Cleveland and Akron, why not consider bringing your small meeting or conference to Medina County?



This booklet is designed to introduce you to our first-class meeting facilities and accommodations.

We can assist with sight tours, booking details, suggested itineraries and event day assistance.

Table of Contents

LODGING

MEDINA

Fairfield Inn and Suites	1
Hampton Inn	1
Holiday Inn Express & Suites	1
Motel 6	1
Quality Inn & Suites	2
Red Roof Inn	2
Super 8	2

BRUNSWICK

Comfort Suites	3
Quality Inn	3

SEVILLE

Hawthorn Suites, Ltd.	4
Quality Inn and Suites	4
Super 8	4

WADSWORTH

Comfort Inn & Suites	5
Holiday Inn Express & Suites	5

Hotel Meeting Space

Dimensions and occupancy chart	6
--------------------------------	---

MEETING FACILITIES

BRUNSWICK

Diamond Event Center and Catering	7
Mapleside Farms	8
The Lodge	9
The Cellar	9
Scene 75 Entertainment Center	10
Skyview Lodge	11
Market 42	12

BURBANK

The Vintage Barn at Creekbend Ranch	13
-------------------------------------	----

CHIPPEWA LAKE

The Oaks Restaurant and Event Center	14
--------------------------------------	----

HINKLEY

Valleaire Event Center and Golf Club	15
--------------------------------------	----

LODI

The Tree House	16
----------------	----

MEDINA

Blue Heron Event Center	17
Bunker Hill Golf Course	18
Foundry Social	19
Fox Meadows Country Club	20
High Voltage Indoor Karting	21
Medina Community Recreation Center	22
Medina Country Club	23
Medina County Community Center	24
Medina County University Center,	
The University of Akron	25
Medina County Veterans Memorial Hall	26
Medina Performing Arts Center	27
Shale Creek Golf Club	28
The Lodge at Allardale	29
Vells Event Center	30
Weymouth Country Club	31
White Birch Barn	32
Williams on the Lake	33

SEVILLE

Buffalo Creek Retreat Ohio	34
Rawiga Golf Club	35

VALLEY CITY

Amy's Rustic Event Center	36
Copper Top Golf Club	37
Jilbert Winery	38

WADSWORTH

Banquet Center at The Galaxy	39
Crowley's Tree Farm	40
White Timbers Winery	41

WESTFIELD

Blair Conference Center	42
Westfield Country Club and Inn	43

Park Meeting Spaces

Medina County Park District	44
Park Meeting Spaces Map	45

Food & Drink

QR Code with Restaurant & Bars	46
--------------------------------	----

Work hard, and then take it easy

Come for business, but stay for pleasure. Enjoy unique shopping, farms, parks, museums and events, and be sure to stay for the fantastic dining experiences.

Explore the many reasons to stay and play in Medina County.



**MEDINA
COUNTY**

— OHIO —

CONVENTION & VISITORS BUREAU

**23 Public Square, Suite 220
Medina, OH 44256**

330-722-5502

visitmedinacounty.com



MEDINA

Fairfield Inn and Suites

3125 Eastpointe Dr., Medina OH 44256
330-722-1722



www.marriott.com/en-us/hotels/clemd-fairfield-inn-and-suites-medina/overview

Hampton Inn

3073 Eastpointe Dr., Medina OH 44256
330-721-8955



www.hilton.com/en/hotels/cakmdhx-hampton-medina/

Holiday Inn Express & Suites

5185 Gateway Dr., Medina, OH 44256
330-722-6006
www.hiexpress.com/medinaoh



Motel 6

3122 Eastpointe Dr., Medina OH 44256
330-723-3322



www.motel6.com/en/home/motels.oh.medina.4112.html

MEDINA

Quality Inn and Suites

2850 Medina Rd., Medina, OH 44256
330-723-4994



www.choicehotels.com/ohio/medina/quality-inn-hotels/oh325

Red Roof Inn

5021 Eastpointe Dr., Medina, OH 44256
330-725-1395



<https://www.redroof.com/property/OH/Medina/RR1656>

Super 8

5161 Montville Dr., Medina, OH 44256
330-723-8118



www.wyndhamhotels.com/super-8/medina-ohio/super-8-medina/overview

BRUNSWICK

Comfort Suites

1464 Town Center Blvd., Brunswick, OH 44212
855-239-9300



www.choicehotels.com/ohio/brunswick/comfort-suites-hotels/oh673

Quality Inn

1435 S Carpenter Rd., Brunswick OH 44212
330-273-1112



www.choicehotels.com/ohio/brunswick/quality-inn-hotels/oh441

SEVILLE

Hawthorn Suites, Ltd.

5025 Park Ave W., Seville, OH 44273
330-769-5025



www.wyndhamhotels.com/hawthorn-extended-stay/seville-ohio/hawthorn-suites-by-wyndham-akron-seville/rooms-rates

Quality Inn and Suites

4949 Park Ave W., Seville, OH 44273
330-769-4949



www.choicehotels.com/ohio/seville/quality-inn-hotels/oh096

Super 8

6116 Speedway Rd, Seville, OH 44273
330-769-6823



www.wyndhamhotels.com/super-8/seville-ohio/super-8-seville/overview

WADSWORTH

Comfort Inn & Suites

5 Park Center Dr., Wadsworth, OH 44281

330-336-7692

www.comfortinnwadsworth.com



Holiday Inn Express & Suites

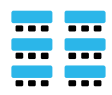
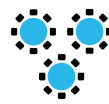
231 Park Center Dr., Wadsworth, OH 44281

330-334-7666

www.hiexpress.com/wadsworthoh



Hotel Meeting Spaces



HOTEL NAME / LOCATION	SIZE	MAXIMUM OCCUPANCY	BANQUET ROUNDS	THEATER	U-SHAPE	BOARDROOM	CLASSROOM
 Medina Conference Room	1000 sq. ft.	40–48	48	48	32	24	40
 Medina Boardroom	360 sq. ft.	16	n/a	n/a	n/a	16	n/n
 Medina	25.5x26.5 675 sq. ft.	30	n/a	n/a	n/a	n/a	n/a
 Medina	28'x24' 675 sq. ft.	10–12	n/a	22	n/a	n/a	n/a
 Seville	n/a	35	n/a	n/a	n/a	n/a	n/a
 Brunswick	32'x20' 640 sq. ft.	45	n/a	67	18	16	35
 Medina	24'x28' 672 sq. ft.	65	n/a	65	19	17	46
 Seville	18'x40' 720 sq. ft.	25	n/a	n/a	n/a	n/a	n/a
 Wadsworth Meeting Room	15'3x29'3 450 sq. ft.	30	n/a	n/a	n/a	n/a	n/a
 Wadsworth Boardroom	11'x26' 290 sq. ft.	12	n/a	n/a	n/a	n/a	n/a
 Brunswick	37'x60' 2200 sq. ft.	247	185	234	62	56	153
 Brunswick Boardroom	30'x20'	30	n/a	n/a	n/a	n/a	n/a
 Wadsworth Room	42'x48' 2100 sq. ft.	125	120	200	60	n/a	100
 Wadsworth North	21'x48' 1050 sq. ft.	100	60	100	30	40	50
 Wadsworth South	21'x48' 1050 sq. ft.	125	60	100	30	40	50
 Wadsworth Ohio Room	24'x27' 650 sq. ft.	30	n/a	n/a	n/a	n/a	n/a
 Wadsworth Boardroom	12'x27' 325 sq. ft.	12	n/a	n/a	n/a	12	n/a

BRUNSWICK

Diamond Event Center and Catering

1480 Pearl Road
Brunswick, OH 44212
(Call) 330-225-1995
(Text) 330-888-9117
www.diamondeventcenter.com
www.diamondeventcatering.com



Kelly Smith
info@diamondeventcenter.com

Facebook - www.facebook.com/DiamondEventCenter
Facebook - www.facebook.com/DiamondEventCenter
Instagram - www.instagram.com/diamondevent
Instagram - www.instagram.com/diamondevent

The Diamond Event Center is a full-service catering company that can supply you with any of three well-appointed ballrooms and mouth-watering food, and also offers many additional options to make your special day remarkable. Guest satisfaction is achieved through dedicated Customer Service. Our talented staff is ready to help you plan the event of a lifetime.



AMENITIES	
Grand Marquis Ballroom	8,000 sq. ft. capacity 500
Princess Room/Chapel	Seating up to 120
AV Equipment	Digital projector
Wi-Fi	Yes
Onsite Catering	Yes
Outside Catering Accepted	Yes
Handicap Accessible	Yes
Free Parking	Yes
Outdoor Space	No
Stage	Portable



BRUNSWICK

Mapleside Farms

294 Pearl Road
Brunswick OH 44212
440-845-0800

The Barn

www.mapleside.com/thebarn



Chris Winter
chris.winter@taste-food.com

Facebook - www.facebook.com/maplesidefarms
Instagram - www.instagram.com/maplesidefarms



Ideal for larger events such as weddings, receptions, and larger corporate, or social events. The Barn's beautiful post and beam construction is the quintessential picture of true rustic elegance with all the comforts of a modern venue.

Set atop 120 acres, the breathtaking views of the apple orchard and Northeast Ohio landscape are sure to impress your guests and make your day one that you will remember forever.

You and your guests will enjoy the finest of culinary experiences with fresh local ingredients, beautiful food presentations, and superior event planning. Our expert staff and stunning new space create the perfect place to celebrate your wedding, host your holiday party, conference, or other social event. All we ask is that you come and enjoy! Leave the rest to us!

The Barn can accommodate up to 300 guests indoors and up to 500 indoors and outdoors. This brand-new venue is filling up fast, so contact us to book your special event today.

AMENITIES

Meeting Room	7,250 sq. ft.
Banquet Capacity	300 +200 outdoors
Reception Capacity	300 +200 outdoors
AV Equipment	Yes
Wi-Fi	No
Onsite Catering	Yes
Outside Catering Accepted	No
Handicap Accessible	Main level only
Free Parking	Yes
Outdoor Space	Yes
Platform and stairs	Yes



The Lodge

www.mapleside.com/thelodge

The lodge features 6,000 square feet of rustic country feel featuring a 30-foot high stone boulder fireplace, our famous “Apple Tree Bar” displaying a giant upside-down iron and hand-blown glass apple tree chandelier with a winding exotic granite top bar.

This fabulously warm and rustic party center also includes a second story loft overlooking the room with a glowing quartz top wine bar. The west side of the building provides wall to wall windows overlooking an amazing 60-mile view of the Ohio countryside along with some of the most beautiful sunsets in northeast Ohio. This building also includes a 900 square foot hardwood dance floor.

AMENITIES	
Meeting Room	6,000 sq. ft.
Banquet Capacity	220 +80 outdoors
Reception Capacity	200 +100 outdoors
AV Equipment/ Wi-Fi	No
Onsite Catering	Yes
Outside Catering Accepted	No
Handicap Accessible	Yes*
Free Parking	Yes
Outdoor Space	Yes
Stage	No

** Bar, restrooms and dance floor are handicap accessible. There are three steps up to tables, however, a table can be placed on the dance floor. Upper level not accessible.*



The Cellar

www.mapleside.com/thecellar-3

The cellar is another warm rustic 2,500 square foot venue that includes a large stone fireplace, a timeless open rough-cut timber frame ceiling, old fashioned Edison lighting features and large wood dance floor. Ideal for mid-sized events such as receptions, conferences, holiday parties, and other social gatherings such as showers or family reunions. The Cellar can be designed and set up to fit the type of the event that you're having. Let our creativity and experience bring your vision to life.

AMENITIES	
Meeting Room	2,500 sq. ft.
Banquet/Reception Capacity	100
AV Equipment/Wi-Fi	No
Onsite Catering	Yes
Outside Catering Accepted	No
Handicap Accessible	Yes
Free Parking	Yes
Stage	Yes
Platform and stairs	No

BRUNSWICK

Scene75 Entertainment Center

3688 Center Road
Brunswick, OH 44212
234-803-1100
www.scene75.com



Facebook - www.facebook.com/scene75official
Instagram - www.instagram.com/scene75



AMENITIES

Party Room 1 Capacity	35
Party Room 2 Capacity	35
Party Room 3 Capacity	35
Party Room 4 Capacity	35
Banquet Room Capacity	70
Facility	1500 sq. ft.
AV Equipment TVs with HDMI / Screens / Wi-Fi	Yes
Onsite Catering	Yes
Outside Catering Accepted	No
Handicap Accessible	Yes
Free Parking	Yes
Outdoor Space	No
Stage	No

Whether your goal is to unite your team, host a meeting or simply enjoy a fun-filled afternoon or evening with colleagues, there is no better place than our Cleveland location.

In addition to offering your company party 120+ exciting arcade games and 10 incredible indoor attractions, Scene75 Cleveland offers several private banquet and party rooms, a delicious catering menu, a full-service center bar, and a dedicated party host(s). Your occasion can be as relaxed or as structured as you like, and our experienced party planners are available to assist as you plan the best company outing for your team. Scene75 Cleveland can host events for 15 guests all the way to 1200 guests. It would be our privilege to host your team at our locally owned operated entertainment venue!

BRUNSWICK

Skyview Lodge

336 Pearl Road
Brunswick Hills, OH 44212
330-225-8345
www.skyviewlodgeinc.com



Contact@SkyviewLodgeInc.com

Skyview is a rural recreation area and full-service event center that has been in business since 1969. We offer both full catered and non-catered events.

Our unique venue allows our clients to customize their event to suit their budget and needs. The hall holds up to 200 guests. The Lodge property can host large events. Outdoor tents, and custom decking can be arranged to meet your needs. We offer both indoor and outdoor access to the property.

If you are looking for a great unique venue for your event, you have come to the right place.

Call today for a custom quote!

AMENITIES	
Meeting Room	1,400 sq. ft.
Banquet Capacity	200
Reception Capacity	200
AV Equipment / Big Screen TV	Yes
Wi-Fi	Yes
Onsite Catering	Yes
Outside Catering Accepted	Yes
Handicap Accessible	Yes
Free Parking	Yes
Outdoor Space	Yes
Stage	Yes



BRUNSWICK

Market 42

2099 Pearl Road

Brunswick, OH 44212

<https://www.themarket42.com/>

Events - <https://themarket42.com/event1/>



info@themarket42.com

Facebook – <https://www.facebook.com/p/The-Market-42-Ohio-61552135706031/>

Instagram – www.instagram.com/market42ohio/

Plan your next great getaway by taking your team to Market 42 and bonding over delicious food and beverages at Brunswick's new food hall! We offer locally sourced foods with an international flavor, the solace of nature right outside our doors, onsite parking, and inside and outdoor dining areas with plentiful seating. Market 42 offers a great change of pace from your regular workspace and provides the opportunity to impress your team, boost morale, enjoy a retreat in a new venue, build employee engagement and internal relationships, augment networking opportunities and develop a better awareness of your business and each other while being nourished, entertained and energized at our beautiful food hall.

AMENITIES

Room Capacity	30
Onsite Catering	Yes
Outside Catering Accepted	Yes
Handicap Accessible	Yes
Private Bathrooms	Yes



BURBANK

The Vintage Barn at Creekbend Ranch

8154 Garman Road
Burbank, OH 44214
330-624-7205
www.vintagebarnatcreekbend.com



vintagebarnatcreekbendranch@gmail.com
Facebook - www.facebook.com/Vintagebarnatcreekbend



AMENITIES	
Meeting Room	2,200 sq. ft.
Theater Capacity	150
Banquet Capacity	150
Reception Capacity	150
AV Equipment	No
Wi-Fi	Yes
Onsite catering	No
Outside Catering Accepted	Yes
Climate Control A/C	No
Handicap Accessible	Yes
Free Parking	Yes
Outdoor Space	Yes
Stage	No

Exchange that conference room for the arena! From meals and meetings to ropin' and ridin' demos, we've got the experience for you. Enjoy the slow-moving country life away from the hustle and bustle, or to develop a little friendly competition or cooperation, try some of our team building events - cowboy style! Here at Creekbend Ranch we never run out of fun and exciting team building activities and ideas. Creekbend Ranch offers a unique and intimate atmosphere for groups to bond, grow, and learn some valuable new skills.

We provide the old west experience that matches your group's needs. From corporate outings, company picnics, to team building events, this is the place for you. A memorable experience your guests will talk about for years to come. We work with you to provide accommodations and activities that will make your day fun and successful.

Corporate Groups are often looking for team building activities. Nothing builds team unity like bucking bales, learning to rope, scavenger hunts and learning about the cowboy code. Stay for some cowboy vittles; we promise, you'll go home well fed, happy, and a whole heck of a lot more unified than when you came.

CHIPPEWA LAKE

The Oaks Restaurant and Event Center

5878 Longacre Lane
Chippewa Lake OH 44215
330-769-2601
www.theoakslakeside.com



Events - info@theoakslakeside.com

Facebook - www.facebook.com/the.oaks.lakeside
Instagram - www.instagram.com/theoakslakeside



AMENITIES	
1 main hall / 3 other small rooms	
Theater Capacity	150
Banquet Capacity	200
Reception Capacity	300
AV Equipment	Microphone
Wi-Fi	Yes
Onsite catering	Yes
Outside Catering Accepted	No
Handicap Accessible	Yes*
Free Parking	Yes
Outdoor Space	Yes

* Handicap accessible in certain areas.

Valleaire Event Center and Golf Club

6969 Boston Road
Hinckley, OH 44233
440-237-9191
www.eventsofvalleaire.rocks

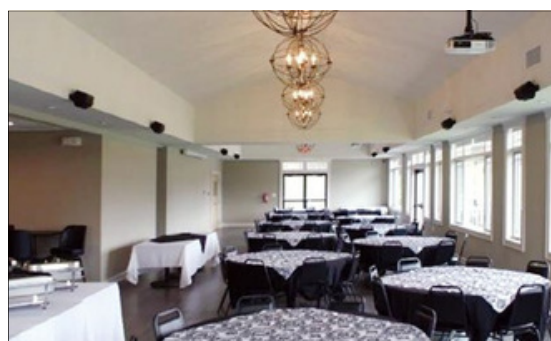


Cindy Cole - Manager
cindyscole@gmail.com

Facebook - www.facebook.com/airegolf/events

AMENITIES	
Meeting Room	1,100 sq. ft.
Banquet Capacity	140
Outdoor Pavilion Capacity	100
AV Equipment – TV/DVD, easel, screen, microphone* & projector*	Yes
Wi-Fi	Yes
Onsite catering	Yes
Outside Catering Accepted	Yes
Handicap Accessible	Yes
Free Parking	Yes
Outdoor Space	Yes
Stage	No

* Included at additional fee.



Whether it is your first-time golfing at our facility or your 50th, we take special care with the important details of your experience. Our staff will go above any expectations, and I would put them up against any club anywhere. We have the track record and letters of appreciation to prove it. For over 25 years, I myself have operated and serviced some of the most unique Cleveland golf events. Whether it is a fundraiser, wedding, memorial gathering, corporate cocktail event, etc., we can provide the service you expect and the care to your details that you didn't.

- | 18 holes public golf at its best, and reasonably priced packages
- | Full-service libations
- | Rental spaces for 12 to 250, pavilions, banquet room, deck, lounges
- | Full-service set-up of events and take-down

The Tree House

7667 Lafayette Rd.

Lodi, OH 44254

The TreeHouse Event Venue and Tree Farm, Lodi OH

thetreeouselodi.com



thetreeouselodi@gmail.com

Facebook - www.facebook.com/thetreeouselodi

Instagram - www.instagram.com/thetreeouselodi



The Tree House event venue is located just south of Medina Ohio in the village of Lodi. We host many events from weddings and receptions to baby showers and birthday parties! Our facilities are fully heated and air conditioned. Our interior boasts beautiful woodwork and a grand stone fireplace giving a homey feel to any event. We can accommodate up to 160 guests seated at one time. Renters are responsible for providing their own vendors such as catering and bar services. All rentals include set up and use of round guest tables and chairs.



MEDINA

Blue Heron Brewery and Event Center

3227 Blue Heron Trace

Medina, OH 44256

300-870-2583

<https://blueheronmedina.com>

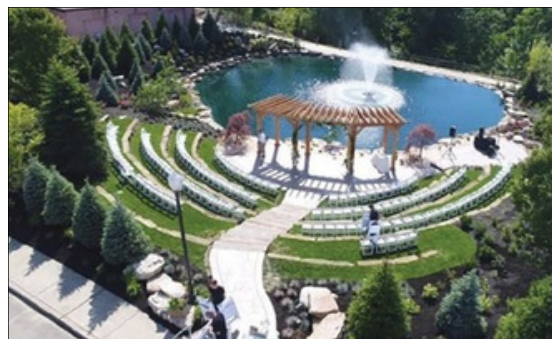


Private Events Team

events@blueheronmedina.com

Facebook - www.facebook.com/blueheroneventcenter

Instagram - www.instagram.com/blueheroneventcenter



Whether you are planning a corporate gala, meeting, presentation, or a casual employee appreciation, the beautiful grounds and facilities at Blue Heron Event Center has you covered. We do all the work, you do all of the enjoying; it's event planning made easy. It is no surprise that it's our mission to provide quality dining and superior event planning and management in the fine art of catering for corporate events.



AMENITIES	
Meeting Room	6,000 sq. ft.
Theater Capacity	450
Banquet Capacity	400
Meeting Room 2	1,200 sq. ft.
Meeting Room 2 Capacity	120
AV Equipment (Screens)	Yes
Wi-Fi	Yes
Onsite catering	Yes
Outside Catering Accepted	No
Handicap Accessible	Yes
Free Parking Outdoor Space	Yes
1,500 sq. ft. patio off of ballroom	Yes
Stage (Outdoor)	Yes

MEDINA

Bunker Hill Golf Course

3060 Pearl Road
Medina, OH 44256
330-722-4174
www.bunkerhillgolf.com



Chad Gibson, General Manager
chad@bunkerhillgc.com

Facebook - www.facebook.com/BunkerHillGolf

AMENITIES

Meeting Room 1 Capacity	75
Meeting Room 2* Capacity Upper level	112
AV Equipment 55" and 65" smart TVs	Yes
Wi-Fi	Yes
Onsite catering	Yes
Outside Catering Accepted	No
Handicap Accessible	Yes*
Outdoor Deck Capacity	40
Outdoor Patio Capacity	75
Outdoor Pavilion Capacity	150
Outdoor Lawn Area Capacity	100
Outdoor Stage at the Pavilion	20' x 30'

* Main level is handicap accessible; the upper is not.



MEDINA

Foundry Social

333 Foundry Street
Medina, OH 44256
330-333-9000
www.thefoundrysocial.com



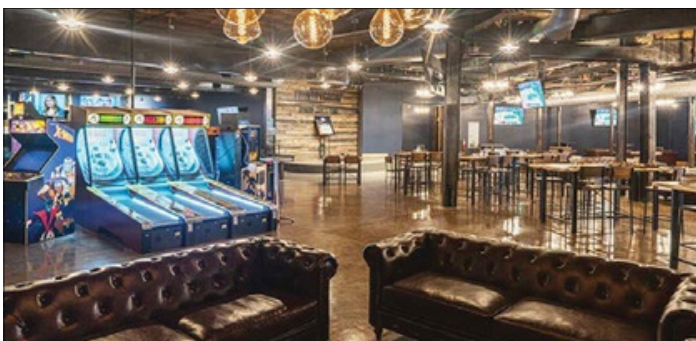
Laurin Jeffers - Events, Community, Fun
LaurinJ@TheFoundrySocial.com

Facebook - www.facebook.com/thefoundrysocial
Instagram - www.instagram.com/thefoundrysocial

We aren't your average uptight corporate banquet center. Our 30,000 square foot facility houses fun and games around every corner, which allows your meeting or event to have a lasting impact on your guests. Both large and small groups can spend time getting down to business and then interacting and socializing on a much more personal level as you team up together or play against one another.



Spirits. Games. Hang.



MEDINA

Fox Meadow Country Club

4260 Fox Meadow Drive
Medina OH 44256
330-723-4653
www.foxmeadowcc.com



Facebook - www.facebook.com/FoxMeadowCountryClub
Instagram - www.instagram.com/foxmeadowcc

From our championship golf course and array of upscale amenities to our stunning views and unmatched service, Fox Meadow Country Club was designed with one-of-a-kind wedding and special events in mind. We offer a variety of indoor and outdoor event venues to choose from, along with customized menus, unique value-added services, and a dedicated team of friendly, experienced special event experts available on-site to ensure every event is flawlessly executed and truly memorable.

AMENITIES	
Meeting Room	2,500 sq. ft.
Banquet Capacity	150
Reception Capacity	150
AV Equipment projector, speaker, microphone	Yes
Wi-Fi	Yes
Onsite catering	Yes
Outside Catering Accepted	Yes*
Handicap Accessible	Yes
Free Parking	Yes
Outdoor Space	Yes
Stage	No

* Available at additional fee.



MEDINA

High Voltage Indoor Karting

333 Foundry Street
Medina OH 44256
330-333-9000
www.highvoltagekarting.com



Laurin Jeffers
LaurinJ@TheFoundrySocial.com

Facebook - www.facebook.com/hvkarting
Instagram - www.instagram.com/hvindoorkarting

Corporate events in Ohio often involve tall buildings, famous landmarks, and showcasing different aspects that make companies unique. There's another option, and it's as far from an atmosphere of suites and ties that you may be imagining.

AMENITIES	
Meeting Room	800 sq. ft.
Meeting Room Capacity	32
AV Equipment 80" TV with HDMI; white board	Yes
Wi-Fi	Yes
Onsite catering	Yes
Outside Catering Accepted	Yes*
Handicap Accessible	Yes
Free Parking	Yes
Outdoor Space	Yes

* Available at additional fee.



The next time you need to impress clients, reward employees, or take a break from the day-to-day routine of the workplace, consider visiting us at High Voltage Karting. We will be sure to provide you with an entirely unique experience.

We aren't your average corporate luncheon or business meeting. Our indoor facility offers both small and large groups the opportunity to interact on a personal level. You can race individually, against each other in teams, or even against others that aren't a part of your group. Corporate events in northeast Ohio are also often dependent on the weather, but not with us! Whether the sun is shining or the snow is falling, we are always open to host an unforgettable event.

MEDINA

Medina Community Recreation Center

855 Weymouth Road
Medina, OH 44256
330-721-6900
mrcinfo@medinaoh.org
www.medinaoh.org/medina-rec



Facebook - www.facebook.com/medinarec

Medina Community Recreation Center offers affordable options to get your meetings off site, and away from company interruptions, so you can conduct energetic and highly productive meetings. Our three spacious meeting rooms are fully equipped with state-of-the-art technology to run your meetings smoothly and effectively. Rental fees are a flat rate, no additional service charge, no hidden fees - and use of state-of-the-art electronics are free!

AMENITIES	
Meeting Room A Capacity	65
Meeting Room B Capacity	35
Meeting Room C Capacity	35
Meeting Room B/C Capacity	100
AV Equipment – microphone, screen, podium, white board, overhead projector, phone line	Yes
Wi-Fi	Yes
Onsite catering	No
Outside Catering Accepted	Yes
Handicap Accessible	Yes
Free Parking	Yes
Outdoor Space	No
Stage	No



MEDINA

Medina Country Club

5588 Wedgewood Road
Medina, OH 44256
330-725-6621
www.medinacc.com



Kirby Manown - General Manager
Kirby.manown@medinacc.com

Facebook - www.facebook.com/MedinaCountryClub
Instagram - www.instagram.com/medinacc_ohio

AMENITIES	
Theater Capacity	400
Banquet Capacity	275
The Medina Room	35
The Magnolia Room	65
The Palmer Room	Kitchen, Bar Golf Simulators
Equipment Speakers, microphone, screens	Yes
Wi-Fi	Yes
Onsite Catering	No
Handicap Accessible	Yes
Free Parking	Yes
Outdoor Space	Yes
Stage	No



Medina Country Club offers an array of world-class event spaces, each designed to provide an elegant and versatile setting for any occasion. Whether you are planning an intimate gathering or a grand celebration, our team is committed to creating a personalized experience that reflects your unique vision, with promises kept at every step. Discover the perfect blend of sophistication and charm at Medina Country Club, where your special moments become lasting memories.



MEDINA

Medina County Fair Community Center

735 Lafayette Rd.
Medina OH 44256
330-723-3641
www.medinaohiofair.com/community-ctr



Amanda Shenberger - Chief Administrative Officer
330-723-9633
secretary@medina-fair.com
medinafair@gmail.com
Facebook - www.facebook.com/MedinaCountyFairOhio
Instagram - www.instagram.com/medinactyfair



Before you plan your next event, please consider the Medina County Community Center. We have facilities for conventions, exhibitions, industry shows, charity balls, auctions, business meetings, dances, Oktoberfest, and more!

All of your events can be held in this massive building. Total square footage is 34,000. One or two different events can be held at the same time depending on the amount of space you need. The halls can be inclusive or closed off according to need. The Medina County Community Center can be reached by any of the main interstates. There are five motels within 10 minutes of the Community Center and at least 10 restaurants within that time frame.

AMENITIES

Entire Facility	34,000 sq. ft.
West Section 840/banquet rectangles; 1,080/theater; (55) 10x10 spaces \$900/day	128'x100' 12,800 sq. ft.
Center Section 379/banquet rectangles; 720/theater; (28) 10x10 spaces \$550/day	66'x100' 6,600 sq. ft.
East Section includes kitchen \$285/day 973/banquet rectangles; 1,800/theater; (72) 10x10 spaces \$1,300/day	148'x100' 14,800 sq. ft.
AV Equipment – Screen	Yes
Wi-Fi	Yes
Onsite catering Kitchen available in east section	Yes
Outside Catering Accepted	Yes
Handicap Accessible	Yes
Free Parking	Yes
Outdoor Space	Yes
Stage (12) 3'x8' sections	Yes

MEDINA

Medina County University Center, The University of Akron

6300 Technology Lane
Medina, OH 44256
330-721-2210
www.uakron.edu/mcuc



The University of Akron
Medina County University Center

Tony Williams - Facilities/Computer Support Assistant
Phone: 330-721-2215

Facebook - www.facebook.com/UniversityofAkron
Instagram - www.instagram.com/uakron

We are a state-of-the-art technology-enhanced facility, ready to serve your needs. Medina County University Center hosts local businesses, organizations and clubs, accommodating a range of activities and events. From a small project meeting to a nationally networked teleconference, we have a space and the technical support to meet your needs.



AMENITIES	
Classroom Capacity	125
AV Equipment	Yes
Wi-Fi	Yes
Onsite catering	No
Outside Catering Accepted	Yes
Handicap Accessible	Yes
Free Parking	Yes
Outdoor Space	No
Stage	No

AV Equipment -

- | CODEC for video-conferencing
- | Computer with touch sensitive Smar tBoard
- | DVD player
- | VCR tape player
- | VHS recorder
- | Real-time DVD recorder
- | Document Camera
- | Port for laptop connectivity
- | Auxiliary audio/video inputs
- | Teleconference phone
- | Plasma display units (65-in and 50-in)
- | Ceiling mounted 50-in
- | Presenter cameras for viewing throughout room

MEDINA

Medina County Veterans Memorial Hall

620 N Broadway
Medina, OH 44256
330-441-0486
www.medinavethall.com



contact@medinavethall.com
Facebook - www.facebook.com/medina.vethall

Located at 620 North Broadway in Medina City, serves all veterans of Medina County. Its official designation is the Courtney Lawrence Home Company which was formed in 1941 but the Hall conducts its monthly operations as the Medina County Veterans Memorial Hall.



MEDINA

Medina Performing Arts Center

851 Weymouth Road
Medina, OH 44256
330-636-3400
www.medinabees.org



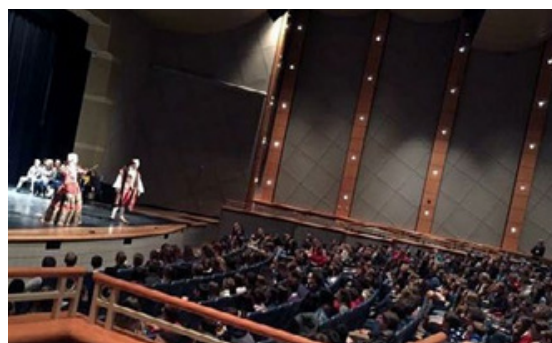
Facebook - www.facebook.com/MedinaPAC

Welcome to the Medina Performing Arts Center, a resource of Medina City Schools used primarily to provide arts education to students in the Medina City Schools District. It is the area's premier venue for experiencing the very best in high school, community and professional entertainment with three performance spaces that are available to rent for public use.

The Main Stage is a spectacular auditorium with orchestra, mezzanine and balcony seating for 1125 patrons with fabulous views of the 48-foot proscenium stage and professional quality sound. Boasting a full-size orchestra pit, 34 baton fly system, spacious wings, large scene shop and green room, nicely appointed makeup and dressing rooms, state-of-the-art lighting, the facility also has a dedicated parking lot and entrance lobby.

The Middle Stage is a beautiful 395 seat proscenium theater and Black Box theater is perfect for smaller performances and workshops up to 100. All spaces are ADA compliant.

Rental rates are specific to each event. For more information, contact the Medina PAC at 330-636-3400 or visit medinabees.org and click on the "community" tab. Also follow us on Facebook Medina Performing Arts Center and on Twitter @MedinaBeesPAC.



MEDINA

Shale Creek Golf Club

5420 Wolff Road
Medina, OH 44256
330-723-8774
www.shalecreekgolfclubggp.com



john@shalecreekgolfclub.com
Adreana Hales - Food and Beverage Manager
adreana@shalecreekgolfclub.com

Facebook - www.facebook.com/shalecreekgolfclub

Shale Creek Golf Club is the premier location for your business event. We are located minutes from Medina Square and I-71. Our distinctive setting overlooking the championship golf course will provide a breathtaking backdrop for your event. With a wide variety of food and drink packages available, our experienced team will create custom packages to meet your needs.

AMENITIES

Meeting Room	2,680 sq. ft.
Banquet Capacity	175
AV Equipment TVs and microphone	Yes
Wi-Fi	Yes
Onsite catering	Yes
Outside Catering Accepted	No
Handicap Accessible	Yes
Free Parking	Yes
Outdoor Space	Yes
Stage	No



MEDINA

The Lodge at Allardale Medina County Park District

141 Remsen Road
Medina OH 44256
330-722-9364
Allardale Park
www.medinacountyparks.com



Jaymi Poindexter – Clerk/Receptionist
parks@medinacountyparks.com

Facebook - www.facebook.com/MedinaCountyParkDistrict
Instagram - www.instagram.com/medinacountyparks

The Lodge at Allardale is a 4,800-square-foot indoor facility on the east side of Allardale. Designed to look like a farm building, The Lodge at Allardale has a capacity of 98 people and features a fireplace, kitchen, restrooms, and meeting room.

AMENITIES	
Meeting Room	4,800 sq. ft.
Theater Capacity	98
Banquet Capacity	98
Reception Capacity	98
AV Equipment Screen, DVD, computer input, input for iPod and mp3 players, and microphone	Yes
Wi-Fi	Yes
Onsite catering	No
Outside Catering Accepted	Yes
Handicap Accessible	Yes
Free Parking	Yes
Outdoor Space Covered Patio and Fire Ring	Yes



MEDINA

Vell's Event Center

3526 Pearl Rd
Medina, OH 44256
330-722-0621
www.vellspartycenter.com

Vell's Event Center



vellseventcenter@zoominternet.net

Facebook - www.facebook.com/VellsMedina

Perfect venue for all celebrations. Your Wedding and Reception begins with us! Relax and we will handle your special day, while spending your special day celebrating with your family and friends. Whatever you look for on a wedding day you will find it here.

AMENITIES	
The Gala Hall Capacity	230
The Wilshire Hall Capacity	150-230
The Solitaire Hall Capacity	50-150
Outside catering accepted	Yes
Outdoor ceremony area	Yes



MEDINA

Weymouth Country Club

3946 Weymouth Road
Medina OH 44256
330-725-6297
www.weymouthcc.com



Victoria Hilber – Sales Director
Victoria.hilber@arcisgolf.com

Facebook - www.facebook.com/WeymouthCC

Instagram - www.instagram.com/weymouthcountryclub

Weymouth Country Club was designed with spectacular special events in mind. Our array of meeting and banquet amenities, delicious catering, and professional event management capabilities make the club an ideal locale for events of all types: business meetings, corporate outings, holiday gatherings, graduation celebrations, birthday parties, golf tournaments and fundraising galas.



AMENITIES	
Meeting Room 1	9,000 sq. ft.
Meeting Room 1 Capacity	500
Meeting Room 2	4,000 sq. ft.
Meeting Room 2 Capacity	120
AV Equipment 2 projectors, screens, microphone, podium, 50" smart TVs	Yes
Wi-Fi	Yes
Onsite catering	Yes
Outside Catering Accepted	No
Handicap Accessible	Yes
Free Parking	Yes
Outdoor Space	Yes
Stage	Possible



MEDINA

White Birch Barn

7180 West Smith Road
Medina, OH 44256
330-441-0945
www.whitebirchbarn.com



samantha@whitebirchbarn.com
serena@whitebirchbarn.com

Facebook - www.facebook.com/whitebirchbarn
Instagram - www.instagram.com/whitebirchbarn



If you're looking for perfect venue near Akron or Cleveland, look no further than White Birch Barn in Medina, OH. Our property has been in the family for decades, originally functioning as a dairy farm. Owner Eric Gasser's grandfather built the barn that sits on a 400-acre piece of Ohio farmland in 1892. The barn has a rustic, raw and natural feel, with an open frame and beams that were hand-hewn decades ago. The barnwood floor is still made from the original wood.

White Birch Barn is only a 10-minute drive from Medina Square, with hotels within 15 minutes of our property. We're secluded enough in the country around Medina, OH to make for an idyllic venue, but close enough to everything to make it convenient.

Set up an appointment to check out our property today.

AMENITIES	
Maximum Occupancy	200
Handicap Accessible	Yes
Onsite Kitchen	Yes
Outside Catering Accepted	Yes
Onsite Bathrooms	Yes
Indoor/Outdoor Space	Yes



MEDINA

Williams on the Lake

787 Lafayette Road
Medina, OH 44256
330-722-6766
www.williamsonthelake.com



Mark and Aly Williams - Owners/chef
mark@williamsonthelake.com

Facebook - www.facebook.com/williamsonthelake
Instagram - www.instagram.com/williamsonthelake

Williams on the Lake is conveniently located in the heart of Medina on a beautiful 26-acre complex. To accommodate groups of various sizes and needs, we offer two well-appointed, fully equipped meeting facilities and lush grounds, featuring a private 11-acre lake for outdoor events and activities. Each meeting room has a patio that can house a 30'x30' tent, reserved exclusively for you.

AMENITIES	
Building B	4,000 sq. ft.
B - Banquet/Theater Capacity	300/325
C - Banquet/Theater Capacity	200/220
Swan Room Banquet/Theater Capacity	40/50
AV Equipment	Yes
Wi-Fi	Yes
Onsite catering	Yes
Outside Catering Accepted	No
Handicap Accessible	Yes
Free Parking	Yes
Indoor/Outdoor Space	Yes
Stage - Building B only, piano available	Yes



SEVILLE

Buffalo Creek Retreat— J. Randall Baird Center

Medina County Park District
8708 Hubbard Valley Road
Seville, OH 44273
330-722-9364
www.medinacountyparks.com



Jaymi Poindexter – Clerk/Receptionist
parks@medinacountyparks.com

Facebook - www.facebook.com/MedinaCountyParkDistrict
Instagram - www.instagram.com/medinacountyparks

With multiple ponds and an abundance of green space, the grounds of Buffalo Creek Retreat are picturesque and park-like.

AMENITIES	
Meeting Room 1	6,000 sq. ft.
Meeting Room 1	248
Capacity Meeting Room 2	Upper Level
Meeting Room 2 Capacity	48
AV Equipment Screen, DVD, computer input, input for iPod and MP3 players, and microphones	Yes
Wi-Fi	Yes
Onsite Catering	No
Outside Catering Accepted	Yes
Handicap Accessible	Yes*
Free Parking	Yes
Outdoor Space Covered patio and upper deck	Yes
Stage – main level	Yes

Upstairs area — There is a non-handicap accessible meeting room (48 capacity) including a deck, kitchen, small bar, and a changing room



* Room 2, upper level is not handicap accessible.

SEVILLE

Rawiga Golf Club

10353 Rawiga Rd.
Seville, OH 44273
330-336-8809
www.rawigacc.com



Facebook - www.facebook.com/Rawiga-Golf-Swim-Club-220795741299308

Starting as a private club in 1959, Rawiga Golf Club now operates as a premier public golf course and banquet facility. The club features a championship golf course that is maintained in superb shape, conditions rarely found at public golf courses. The club also hosts numerous special events, such as weddings, banquets, charity events, leagues and outings.

AMENITIES	
Banquet Capacity	130
Sports Bar Capacity	60
Onsite catering	Yes
Outside catering accepted	Yes
Wi-Fi	Yes



VALLEY CITY

Amy's Rustic Events Center

6780 Center Road

Valley City, OH 44280

(330-483-9463

www.amysarbors.com/rustic-event-center2.html

Amy's Rustic Event Center



amy@amysarbors.com

Facebook – www.facebook.com/amysarbors

Looking for a unique, rustic space for your next event? Look no further than Amy's Rustic Event Center! Just steps from downtown Valley City, our Rustic Event Center is the perfect place to host your next event. Weddings, bridal or baby showers, birthdays, fundraisers, high school reunions & more.... we have options to meet your party planning needs!

AMENITIES	
Meeting room	1,600 sq. ft.
Room capacity	130
Onsite catering	Yes
Outside catering accepted	Yes
Outdoor ceremony area	Yes



VALLEY CITY

Copper Top Golf Club

5740 Center Road
Valley City, OH 44280
330-225-6122
www.coppertopgolf.com



Donna Steward – Events Director
dsteward@coppertopgolf.com

Facebook – www.facebook.com/coppertopat.cherokeehills

Whether you're having a 20 person birthday party or a full on corporate event, Coppertop has everything you'll need to have a great, hassle free gathering! With a wide variety of food options and venue spaces to choose from, you'll have no problem selecting the perfect accommodations at an affordable price!



The Ball Room

The Ball Room with its simple elegance is a great place to host your reception. With a full view of the golf course as a backdrop and a private deck, this venue is truly in a league of its own.

You and your guests will experience some of the finest in local culinary arts. Choose from our extensive number of entrees to ensure that your guests will be thrilled with the taste and attention to detail that goes into creating the perfect event.

- | Meeting room - 3,000 sq. ft.
- | Reception capacity - 200
- | Onsite catering available



The Barn Loft

The Barn loft captures the true beauty of the historical 100 year old barn, with video games, four televisions, one of which is 144 inches. It is a perfect place for smaller receptions or big receptions that are looking for extra room to entertain guests!

- | Meeting room – 1,100 sq. ft.
- | Room capacity – 50
- | Onsite catering available
- | AV equipment available



The Veranda

The Veranda provides our guests with a long seating arrangement ideal for medium sized parties up to 80 guests. Continuous windows allow for an ideal amount of natural light, showing off a spectacular view of the golf course. If additional seating is needed, the dividing wall can be opened to lead guests into The Loft area that includes an additional bar, video games and a 144 inch television.

- | Meeting room – 800 sq. ft.
- | Room capacity – 80
- | Onsite catering available
- | Overlooks golf course
- | AV equipment available

VALLEY CITY

Jilbert Winery

1496 Columbia Rd
Valley City, OH 44280
216-618-5749
www.ohiohoneywine.com



Facebook – www.facebook.com/jilbertwinery

Jilbert Winery is one of the area's premier wine and dine venues in the Cleveland, Ohio area, offering an intimate picturesque setting as well as an elegant country atmosphere for special events. Jilbert Winery's beautiful banquet room provides a choice of options for entertaining parties of up to 72 guests depending on whether it is a buffet or a plated event. This dining room makes a perfect setting for intimate gatherings. Jilbert Winery's country elegant atmosphere is the perfect complement to your special event. Whether it's an elegant event in the country or a quiet wedding ceremony with close family and friends in front of a stone fireplace. We take pride in making every event special for our guests.

AMENITIES		
Room	capacity	72
Onsite	catering	No
Handicap accessible		Yes



Banquet Center at the Galaxy

201 Park Center Drive
Wadsworth, OH 44281
330-334-3663
www.galaxybanquetcenter.com



Cassie Corban - Banquet Director
CassieW@galaxyrestaurant.com

Alexis Corban - Banquet Manager
AlexisC@galaxyrestaurant.com

Facebook - facebook.com/profile.php?id=61561174282877



AMENITIES

AV Equipment - Available for rent	Yes
Wi-Fi / High Speed Internet	Yes
Onsite catering Outside Catering	Yes
Accepted Handicap Accessible	Yes
Free Parking	Yes
Outdoor Space - Comfort Inn	Yes
Patio	Yes
Stage	Yes

The Galaxy Banquet Center offers everything from a casual boardroom setting to a large wedding reception hall and venue with full service capacities of up to 500 people. We offer 4 uniquely decorated rectangular-shaped rooms that make us the ideal choice for elegant wedding celebrations, business conferences, corporate events, meetings, and seminars. Each room can be combined or separated depending on the size of the function. Starlit and cloud-scaped ceilings complement the elegant décor to provide an enchanting atmosphere for any event. Also we offer easy hotel arrangements for weddings, business trips, and other special occasions with our Holiday Inn Express Hotel and Suites or Comfort Inn and Suites, both of which are conveniently located right next to the Galaxy Banquet Center and Restaurant. Your guests can also enjoy other areas of the Galaxy which include the Wine Room, Circle L Steakhouse, Sports Bar and Patio.

The Galaxy Meeting Rooms	Dimensions	Square Footage	Ceiling Height	Banquet (Rounds)	Theater	Classroom	Hollow Square	U-Shape	Conference Boardroom	Reception	Classroom
Cellar Room	20' x 30'	600	10'	36	40	30	24	15	20	36	30
Moonglow	56' x 27'	1332	12'8"	50	80	48	48	32	48	90	8
Venus	55' x 28'	1540	12'8"	60	100	56	48	36	40	110	15
Mars	56' x 29'	1595	12'8"	60	100	56	48	36	40	110	18
Starlight	126' x 30'	3780	12'8"	120	250	60	88	40	64	250	35
Venus/Moonglow	55' x 55'	3025	12'8"	120	220	100	66	55	66	220	26
Venus/Mars	56' x 57'	3135	12'8"	160	250	112	66	55	66	260	30
Mars/Venus/Moonglow	84' x 55'	4467	12'8"	220	350	180	NA	NA	NA	350	50
Starlight/Mars	126' x 30' / 55' x 29'	5375	12'8"	180	400	120	NA	NA	NA	360	48
Starlight/Mars/Venus	126' x 30' / 55' x 57'	6915	12'8"	600	600	200	NA	NA	NA	460	70
Galaxy Grand Ballroom	55' x 114' / 71' x 30'	8400	12'8"	700	700	300	NA	NA	NA	600	85

WADSWORTH

Crowley's Tree Farm

2150 Greenwich Rd
Wadsworth, OH 44281
330-574-8252
www.crowleystreefarm.com



Event Contact
info@crowleystreefarm.com

Facebook - www.facebook.com/crowleystreefarm2021
Instagram - www.instagram.com/crowleystreefarm

Crowley's Tree Farm offers a stunning location in Medina county to exchange wedding vows and celebrate memorable moments. An extraordinary setting at a great value for your money, provides enough flexibility to ensure you have the wedding you've always envisioned. We offer charming ceremony spaces situated throughout the lush landscape of our 34 acre family owned tree farm. An exquisite two-story rustic barn offers a romantic setting to serve as the backdrop for the wedding or special event of your dreams. Contact us today to learn more about all the venue has to offer.



AMENITIES

Meeting Room capacity	225
AV Equipment	No
Wi-Fi	No
Onsite catering	No
Outside Catering Accepted	Yes
Handicap Accessible	Yes
Free Parking	Yes
Outdoor Space	Yes
Stage	No



WADSWORTH

White Timbers Winery

10036 Rittman Road
Wadsworth, OH 44281
330-331-7383
www.thewhitetimbers.com



Events - whitetimbers.peggy@gmail.com

Facebook - www.facebook.com/WhiteTimbersWinery

Instagram - www.instagram.com/whitetimberswinery

Every occasion is special when you host your private event at White Timbers. We can help you host your event with an intimate atmosphere and gorgeous views. We strive to make event planning easy, so we are happy to arrange a tour and consultation meeting. And we offer three event packages to best fit your needs.



WESTFIELD

Westfield Country Club and Inn

6500 Greenwich Rd
Westfield Center OH
330-887-0391
www.westfieldgroupcountryclub.com



wgcc@westfieldgrp.com

Offering a legacy of warm hospitality since 1937, Westfield Country Club is a family friendly country club with a variety of recreational activities, enjoyable and challenging golf experiences and social offerings. Our rich history, professional and friendly team members and our outstanding facilities are part of the reason we have one of the most desirable and exclusive memberships in northern Ohio.



FACILITY SEATING CAPACITIES

	U-shaped	Rounds of 8	Crescents of 6	Theatre Style	Diamond	Conference
Westfield Inn						
Room	Dining	Conference w/out AV	Conference w/AV	U-Shape	Reception	
Main Dining	64	26	25	24	70	
East Parlor/	26	20	15	n/a	*26	
West Parlor/	26	20	15	n/a	*26	
Westfield Country Club						
Room	Dining	Theatre Style	Reception			
Grille Room	40	n/a	n/a			
Club Room	40	n/a	n/a			
Pavilion	96	250	250			
Scoreboard	30	n/a	n/a			



Blair Conference Center

9079 Leroy Road
Westfield Center, OH
330-887-6530



https://www.westfieldgroupcountryclub.com/Host_an_Event
HospitalityOperations@westfieldgrp.com

Our hospitality campus is conveniently located between Cleveland and Columbus in the village of Westfield Center, OH; just minutes from 224, I-71 and I-76. Our unique hospitality venues are open to the public. The Blair Conference Center the perfect venue for any meeting or special gathering. Our main parlors can accommodate up to 400 guests for a cocktail-style reception or 220 guests for a sit-down meal. If you are looking for a smaller, more intimate event, we can accommodate that too.

- | Onsite banquet manager
- | Wireless AV capabilities
- | Onsite catering
- | Wi-Fi and business center access
- | Complimentary onsite parking
- | Onsite lodging available at the Westifield Inn

FACILITY SEATING CAPACITIES

	U-shaped	Rounds of 8	Crescents of 6	Theatre Style	Diamond	Conference
Blair Conference Center						
Room	Rounds of 8	Crescents of 6	Theatre Style	Diamond	U-Shape	Conference
Parlor A	24	18	40	14	15	16
Parlor B	48	36	70	24	22	25
Parlor C	24	18	40	14	15	16
Parlor D	48	36	70	24	22	25
Parlor E	112	90	150	24	26	24
All Parlors	256	192	420	n/a	n/a	n/a
Club Room	32	24	70	24	22	25
Tavern Room	n/a	n/a	n/a	n/a	n/a	n/a
	Hollow Square	Classroom	Theatre Style	Pods	U-Shape	Conference
Garden Room	20 - black chairs	16 - black chairs	50	24 - black chairs	*16 - black chairs	*16 - black chairs
	26 - green chairs	22 - green chairs		30 - green chairs	22 - green chairs	22 - green chairs

Park Meeting Spaces

Medina County Park District

6364 Deerview Lane
Medina, OH 44256
330-722-9366
www.medinacountyparks.com



Jaymi Poindexter – Clerk/Receptionist
parks@medinacountyparks.com

Facebook - www.facebook.com/MedinaCountyParkDistrict
Instagram - www.instagram.com/medinacountyparks

Since its formation, the park district has acquired and developed land in areas throughout the county as shown in this website. Emphasis has been placed on acquiring land for open space preservation and preservation of unique natural resources. Medina County Park District currently manages over 7500 acres in Medina County.



Open-Air Shelters/Pavilions:

- Allardale Park
- Buckeye Woods
- Carolyn Ludwig Mugrage Park
- Green Leaf
- Hubbard Valley/Buffalo Creek
- Plum Creek
- River Styx

Park Meeting Spaces Map

Medina County Park District

6364 Deerview Lane

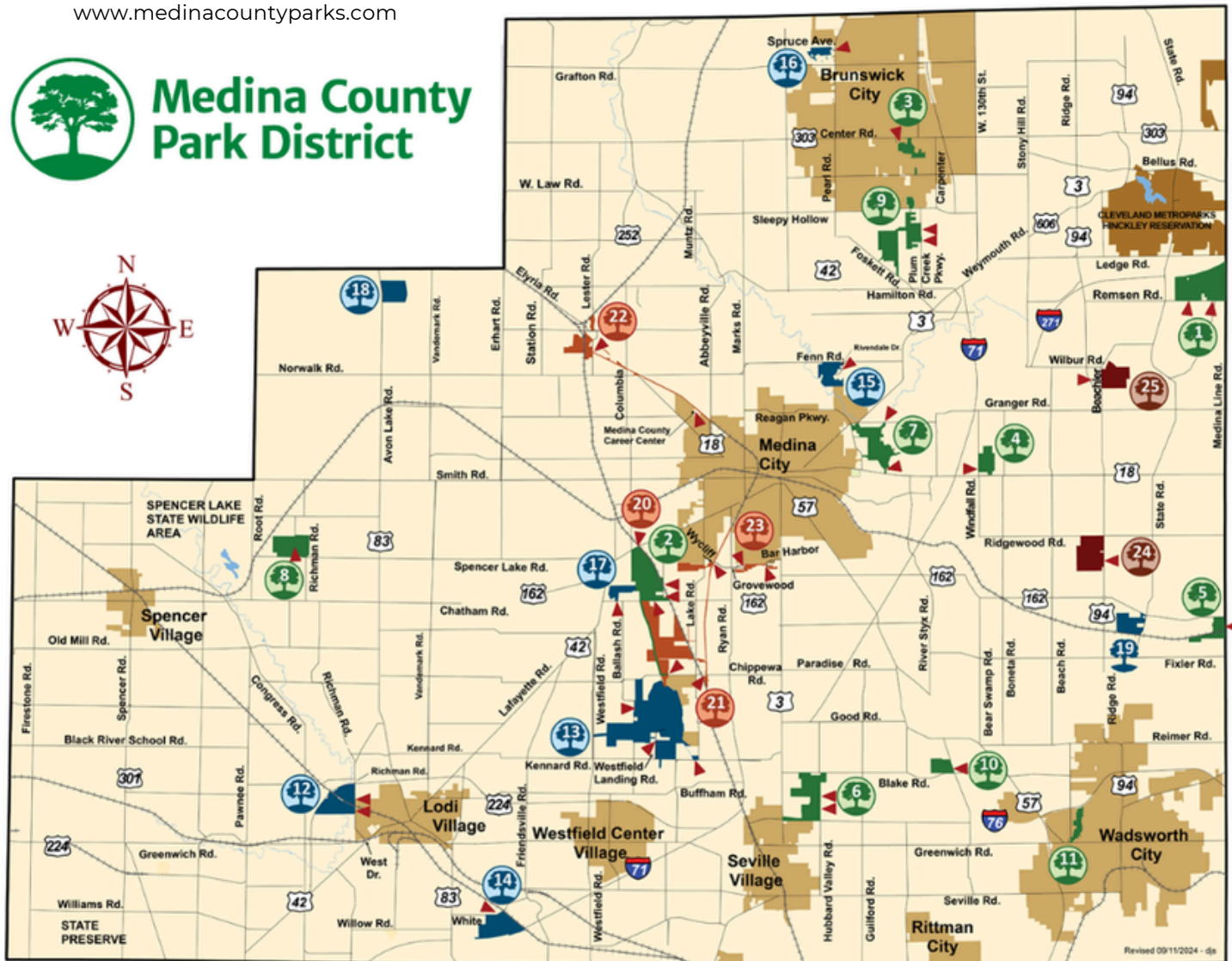
Medina, OH 44256

330-722-9366

www.medinacountyparks.com



**Medina County
Park District**



PARKS

1. [Allardale Park](#)
2. [Buckeye Woods](#)
- [Park District Headquarters](#)
3. [Brunswick Lake](#)
- [Susan Hambley Nature Center](#)
4. [Carolyn Ludwig Mudge Park](#)
5. [Green Leaf](#)
6. [Hubbard Valley/Bufalo Creek](#)
7. [Lake Medina](#)
8. [Letha House](#)
9. [Plum Creek](#)
10. [River Styx](#)
11. [Holmesbrook Park](#)

NATURE PRESERVES

12. [Black River](#)
- [Hidden Hollow Camp](#)
- [Bluebell Valley](#)
13. [Chippewa Lake](#)
- [Krabill Lodge/Boat Ramp/](#)
- [Paddlecraft Launch/](#)
- [Birding & Bridle Trail](#)
14. [Killbuck Lakes](#)
15. [Medina Marsh](#)
16. [Princess Ledges](#)
17. [Schleman](#)
18. [Litchfield Wetlands](#)
19. [Sharon](#)

MULTIPURPOSE TRAILS

20. [Chippewa Inlet Trail](#)
21. [Chippewa Rail Trail](#)
22. [Lester Rail Trail](#)
23. [Montville Trail](#)

WILDLIFE SANCTUARIES

24. [Alderfer-Chatfield](#)
- [Oenslager Nature Center](#)
25. [Granger Wetlands](#)



Picture Yourself in
Medina County

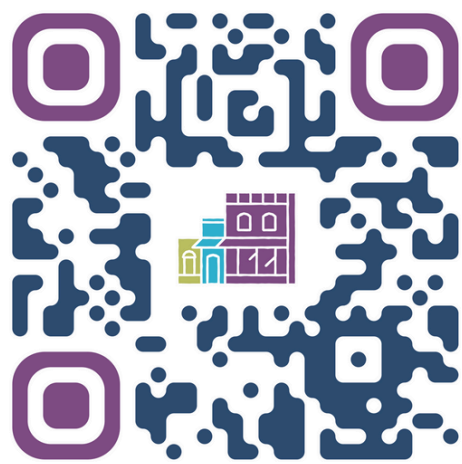


Picture Yourself in
Medina County



Picture Yourself in
Medina County

Scan QR Code full list of Restuarant & Bars



Picture Yourself in
Medina County



Picture Yourself in
Medina County



Picture Yourself in
Medina County

TIMELESS CHARM WITH A VIBRANT SPIRIT

The timeless charm of Medina County communities provide group visitors a wide variety of entertainment, exploration and dining experiences. Whether you desire indoor or outdoor adventures, this Northeast Ohio destination begs you to immerse yourself in its vibrant spirit.

Group-Friendly Attractions

- Castle Noel
 - Alien 3D Golf
- Root Candles
- Scene 75
- Majestic Meadows
- Alpacas & Boutique
- Foundry Social
 - High Voltage Indoor Karting
- Miss Molly's Tea Room
- Mapleside Farms
- Buckin' Ohio
- Engage Virtual Range
- Timber Axe Throwing
- Richardson Farms
- Blue Sky Drive-In
- Brush Tip Art Studio
- All Fired Up!
- Medina Historic Downtowns
- Medina County Parks

Yearly Events & Festivals

- Medina Ice Festival
- Frog Jump
- Fall Foliage Festival
- Medina Candle Light Walk
- Wadsworth Candle Light Walk



Bring your meeting or group to Medina County!

Scanning a QR code for your next business or group outing in Medina County streamlines access to venue details and activity options. It simplifies planning by instantly providing information on locations, schedules, and reservations.





MEDINA COUNTY

— OHIO —

CONVENTION & VISITORS BUREAU

- Productivity and Success
- New Connections
- Takeaways other than hotel towels
- Grateful Audiences
- (Almost Rock Star) Industry Status

23 Public Square, Suite 220
Medina, OH 44256

330-722-5502

visitmedinacounty.com

